

LAW OFFICE OF MICHAEL E. DAVIS, LLC

December 31, 2022

VIA E-FILING PORTAL

Division of Local Government
Department of Local Affairs
1313 Sherman Street, Room 521
Denver, CO 80203

VIA EMAIL (assessor@elbertcounty-co.gov)

Office of the Elbert County Assessor
215 Comanche Street P.O. Box 26
Kiowa, CO 80117

VIA EMAIL (Dallas.Schroeder@elbertcounty-co.gov)

Office of the Elbert County Clerk & Recorder
215 Comanche Street
Kiowa, CO 80117

RE: Map of District Boundaries
Elkhorn Ranch Metropolitan District No. 1

To Whom It May Concern:

Pursuant to §32-1-306, C.R.S., special districts must file a current, accurate map of its boundaries with the Division of Local Government, County Assessor, and County Clerk & Recorder on or before January 1, of each year. As such, attached please find a current map of the District boundaries showing the revised district boundaries.

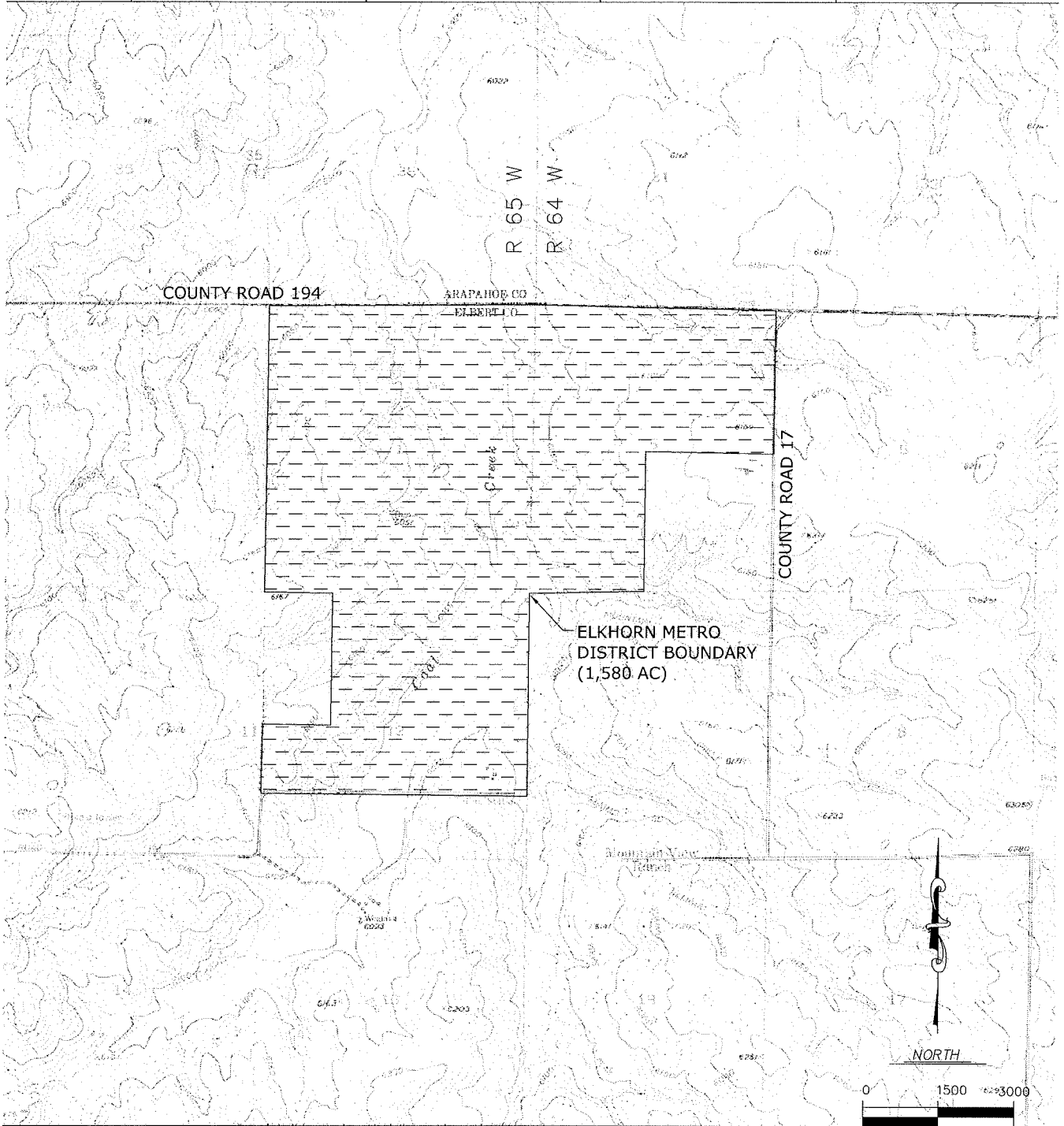
Elkhorn Ranch Metropolitan District No. 1


Should you require any additional information, please contact our office.

Very truly yours,

LAW OFFICE OF MICHAEL E. DAVIS, LLC

Enclosure



 CIVIL RESOURCES, LLC		COAL CREEK BOUNDARY MAPPING
		ELKHORN PARK METROPOLITAN DISTRICT
DATE: 12/2009	FIGURE: A	