

LAW OFFICE OF MICHAEL E. DAVIS, LLC

December 31, 2023

VIA E-FILING PORTAL

Division of Local Government
Department of Local Affairs
1313 Sherman Street, Room 521
Denver, CO 80203

VIA EMAIL (dkayl@weldgov.com)

Office of the Weld County Assessor
1400 North 17th Avenue
Greeley, CO 80631

VIA EMAIL (weld-districts@weldgov.com)

Office of the Weld County Clerk & Recorder
1402 North 17th Avenue
Greeley, CO 80631

RE: Map of District Boundaries
Vista Meadows Metropolitan District

To Whom It May Concern:

Pursuant to §32-1-306, C.R.S., special districts must file a current, accurate map of its boundaries with the Division of Local Government, County Assessor, and County Clerk & Recorder on or before January 1, of each year. As such, attached please find a current map of the District boundaries, which shows that the boundaries were unchanged.

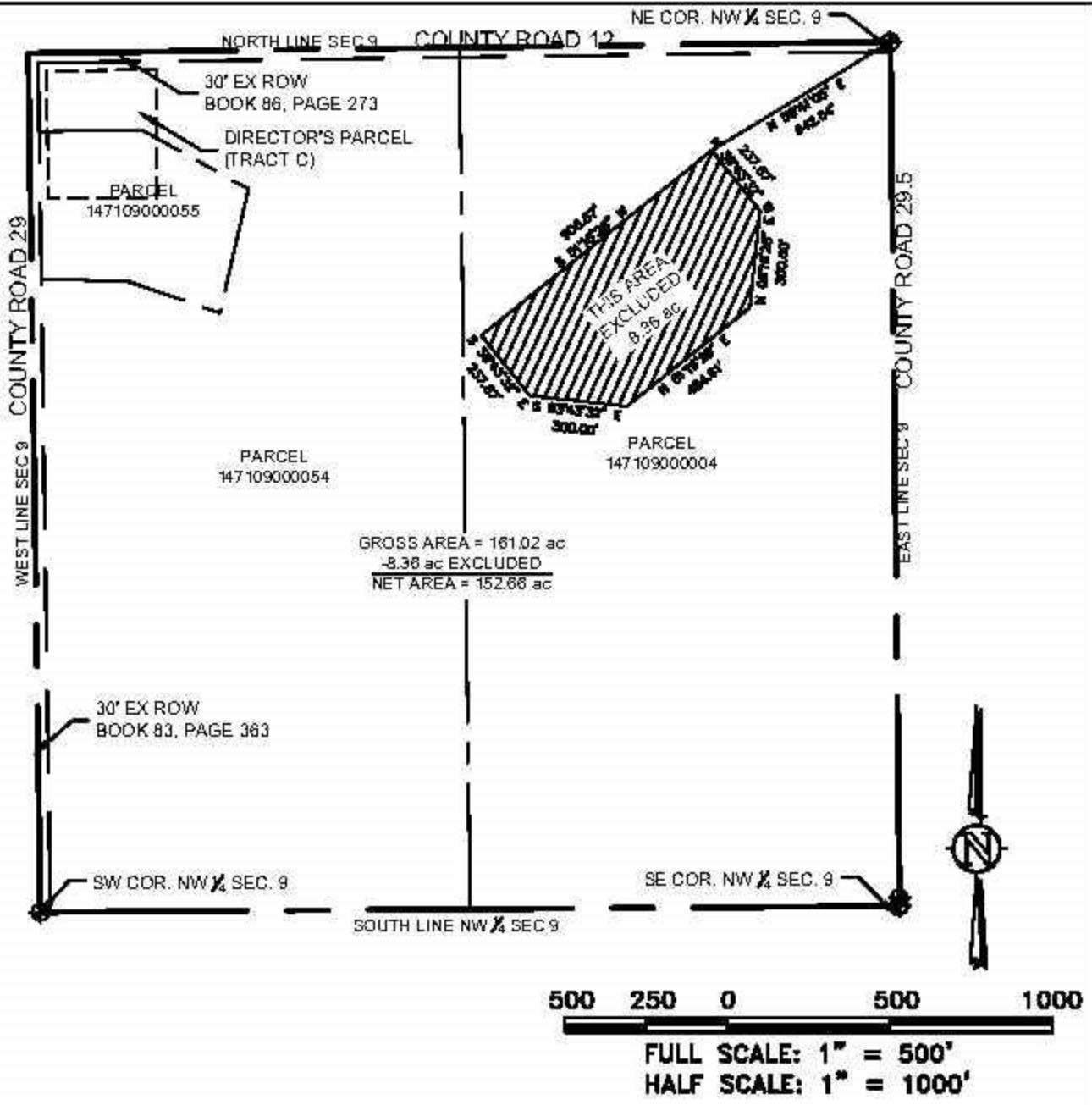
Vista Meadows Metropolitan District

Should you require any additional information, please contact our office.

Very truly yours,

LAW OFFICE OF MICHAEL E. DAVIS, LLC

Enclosure



VISTA MEADOWS DISTRICT NOTES

1. THIS IS NOT A MONUMENTED LAND SURVEY.
2. THE DISTRICT BOUNDARY IS THE EXTERIOR PERIMETER OF THE CONJUGATION OF WELD COUNTY PARCEL NUMBERS 147109000004, 147109000054, AND 147109000055 EXCLUDING THAT ACREAGE AS SHOWN AND HATCHED WITHIN PARCEL 147109000004.
3. THE DISTRICT CONTAINS 152.7 AC ±.

VISTA MEADOWS
DISTRICT BOUNDARY MAP
WELD COUNTY, COLORADO



Western Engineering Consultants, Inc LLC

WESTERN ENGINEERING CONSULTANTS
127 S. DENVER AVE FT. LUPTON, CO 80621
(720) 685-9951
www.westerneci.com