

LAW OFFICE OF MICHAEL E. DAVIS, LLC

December 31, 2023

VIA E-FILING PORTAL

Division of Local Government
Department of Local Affairs
1313 Sherman Street, Room 521
Denver, CO 80203

VIA EMAIL (dkayl@weldgov.com)

Office of the Weld County Assessor
1400 North 17th Avenue
Greeley, CO 80631

VIA EMAIL (weld-districts@weldgov.com)

Office of the Weld County Clerk & Recorder
1402 North 17th Avenue
Greeley, CO 80631

VIA EMAIL (RBridges@adcogov.org)

Office of the Adams County Assessor
4430 South Adams Parkway, C2100
Brighton, CO 80601

VIA EMAIL (clerk@adcogov.org)

Office of the Adams County Clerk & Recorder
4430 South Adams Parkway
Brighton, CO 80601

**RE: Map of District Boundaries
Bromley Park Metropolitan District No. 6**

To Whom It May Concern:

Pursuant to §32-1-306, C.R.S., special districts must file a current, accurate map of its boundaries with the Division of Local Government, County Assessor, and County Clerk & Recorder on or before January 1, of each year. As such, attached please find a current map of the District boundaries, which shows that the boundaries were unchanged.

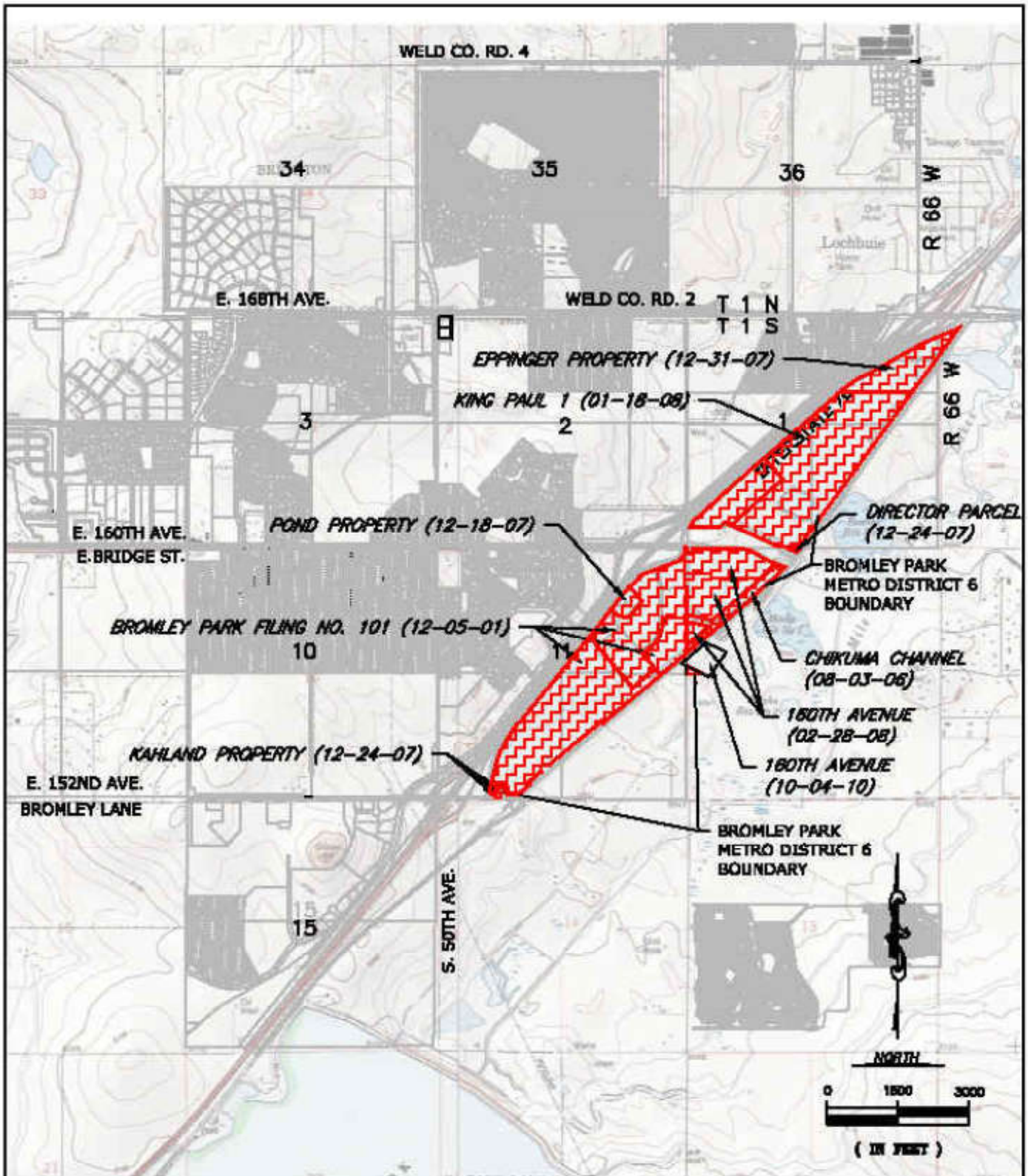
Bromley Park Metropolitan District No. 6

Should you require any additional information, please contact our office.

Very truly yours,

LAW OFFICE OF MICHAEL E. DAVIS, LLC

Enclosure




 CIVIL RESOURCES, LLC		I-76 DISTRICT BOUNDARY MAPPING
DATE: 7/2018	FIGURE: G	BROMLEY PARK METROPOLITAN DISTRICT 6

EXHIBIT 1 (cont.)

