

LAW OFFICE OF MICHAEL E. DAVIS, LLC

December 31, 2022

VIA E-FILING PORTAL

Division of Local Government
Department of Local Affairs
1313 Sherman Street, Room 521
Denver, CO 80203

VIA EMAIL (Lcassessor@co.larimer.co.us)

Office of the Larimer County Assessor
200 W Oak St #2100
Fort Collins, CO 80522

VIA EMAIL (myersag@co.larimer.co.us)

Office of the Larimer County Clerk & Recorder
200 W Oak St STE 1000
Fort Collins, CO 80521

VIA EMAIL (dkayl@weldgov.com)

Office of the Weld County Assessor
1400 North 17th Avenue
Greeley, CO 80631

VIA EMAIL (weld-districts@weldgov.com)

Office of the Weld County Clerk & Recorder
1402 North 17th Avenue
Greeley, CO 80631

RE: Map of District Boundaries
High Plains Metropolitan District No. 1

To Whom It May Concern:

Pursuant to §32-1-306, C.R.S., special districts must file a current, accurate map of its boundaries with the Division of Local Government, County Assessor, and County Clerk & Recorder on or before January 1, of each year. As such, attached please find a current map of the District boundaries, which shows that the boundaries were unchanged.

High Plains Metropolitan District No. 1

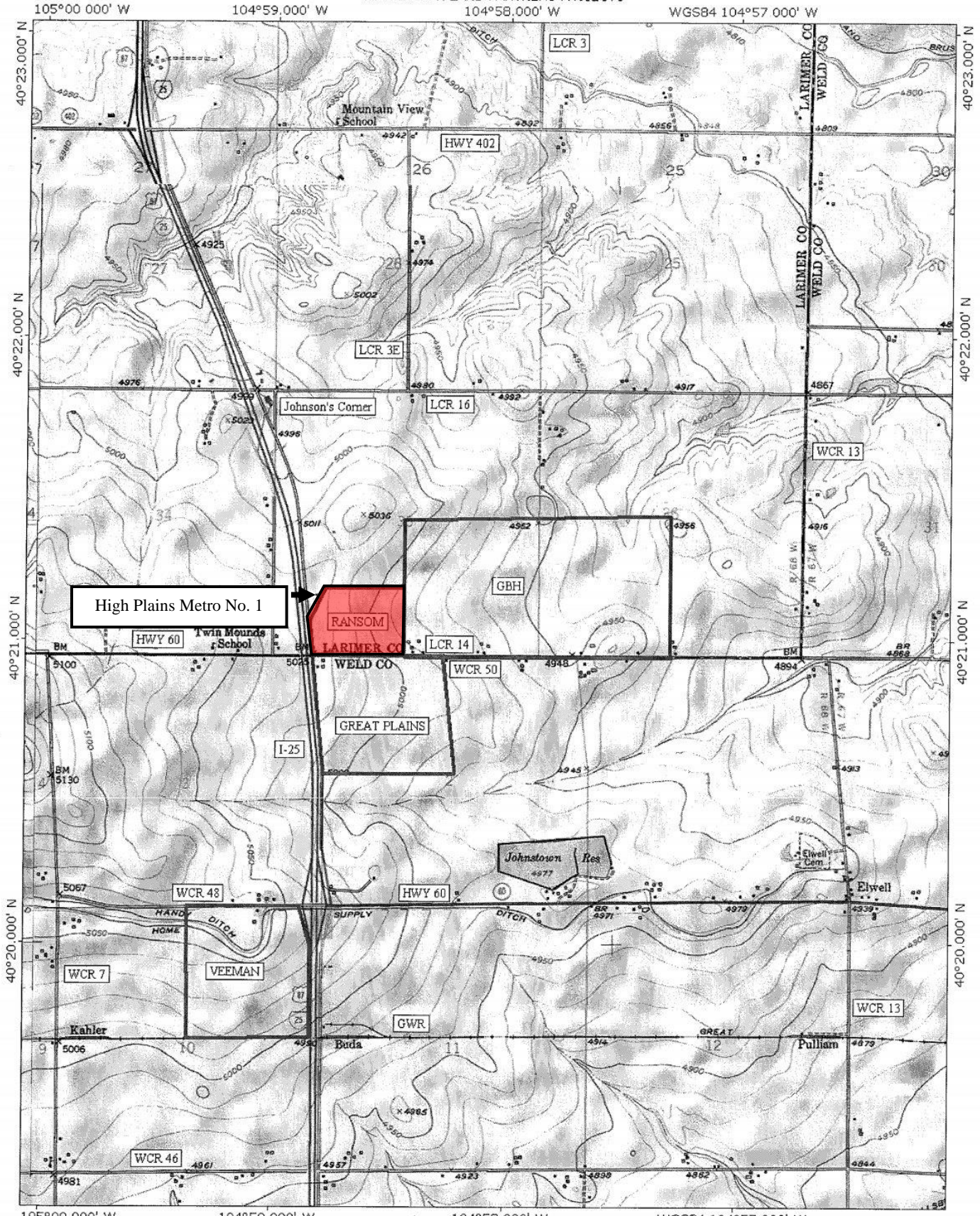
Should you require any additional information, please contact our office.

Very truly yours,

LAW OFFICE OF MICHAEL E. DAVIS, LLC

Enclosure

JOHNSTOWN LAND PARTNERS PROJECTS



High Plains Metro No. 1

RANSOM
LARIMER CO

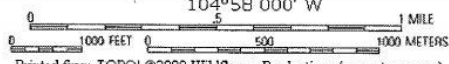
GBH

GREAT PLAINS

Johnstown Res

Elywell Cem

10°



Printed from TOPO! ©2000 Wildflower Productions (www.topo.com)